



**Ministry of Finance  
Bureau of Budget & Planning  
Office of Planning & Statistics**

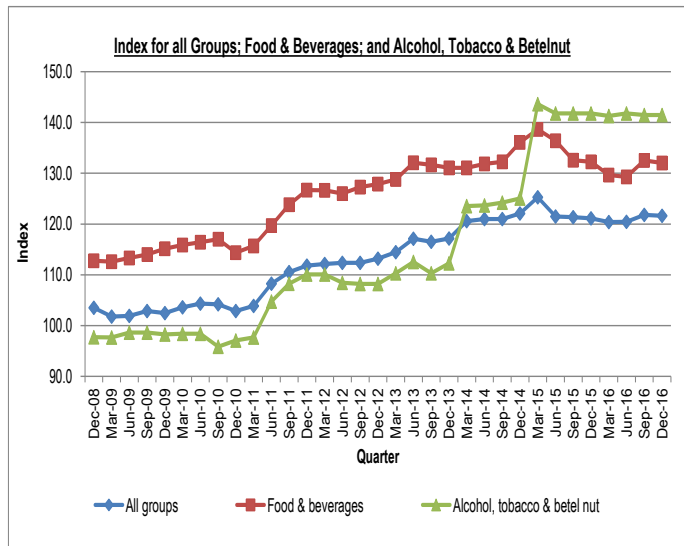
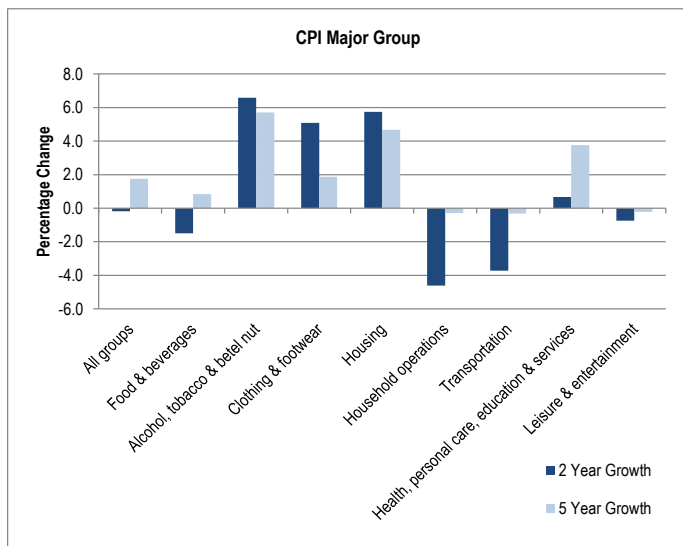
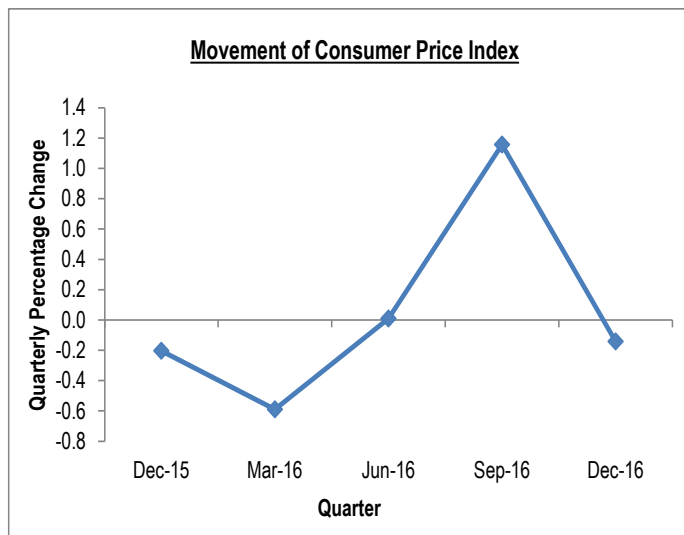
P. O. Box 6011, Melekeok, Republic of Palau 96939  
Tel. (680) 767-1269/1270 Fax. (680) 767-5642

Email: [ops@palaugov.org](mailto:ops@palaugov.org) ; Web address: <http://www.palaugov.org/budgetandplanning/>

**DECEMBER 2016 QTR KEY FIGURES**

Major Groups	QTR on QTR % Change	YR on YR % Change
Food & Beverage	-0.4	-0.2
Alcohol, tobacco & betel nut	0.0	-0.2
Clothing & Footwear	-2.4	8.1
Housing	0.3	6.9
Household Operations	0.1	0.3
Transportation	0.0	-1.5
Health, Personal care, Education & Services	-0.1	1.6
Leisure & Entertainments	-1.5	-1.5
<b>ALL GROUPS</b>	<b>-0.1</b>	<b>0.4</b>

Source: Bureau of Budget & Planning, MOF



**DECEMBER 2016 QTR KEY POINTS**

- All groups saw a decrease of 0.1% over the last quarter. Two groups that showed a significant decrease were Clothing & Footwear group and Leisure & Entertainment group at -2.4% and -1.5% respectively. Items that contributed the most to these decreases include shirts, as well as dog food. The remaining groups saw little or no change this quarter.
- The annual increase of 0.4% for the last 12 months was largely driven by Clothing & Footwear group and Housing group which saw an increase of 8.1% and 6.9% respectively. Items that contributed the most to these groups' increase include clothing, household maintenance, and rent. On the other hand, Transportation group, and Leisure & Entertainment group both saw a significant decrease of 1.5% respectively. The decrease in motor fuel, oil and dog food prices are the cause for these groups' decrease.



**Ministry of Finance  
Bureau of Budget & Planning  
Office of Planning & Statistics**

P. O. Box 6011, Melekeok, Republic of Palau 96939  
Tel. (680) 767-1269/1270 Fax. (680) 767-5642

Email: [ops@palaugov.org](mailto:ops@palaugov.org) ; Web address: <http://www.palaugov.org/budgetandplanning>

**DECEMBER 2016 QTR KEY FIGURES**

Imports	Total FOB Value 4 <sup>th</sup> Qtr 2015	Total FOB Value 4 <sup>th</sup> Qtr 2016	% Change
Live Animals; animal products	2,343,168	2,539,718	8.4
Vegetable products	1,817,699	1,554,981	-14.5
Prepared foodstuffs, beverages, spirits & tobacco	5,891,162	5,578,663	-5.3
Mineral products	7,297,742	7,199,115	-1.4
Chemicals and allied products	2,207,980	1,958,109	-11.3
Articles of stone, plaster, cement, glass & ceramic products	502,266	308,160	-38.6
Base metals & articles thereof	1,750,200	1,664,665	-4.9
Machinery & mechanical & electrical appliances & parts	7,020,343	6,531,365	-7.0
Vehicles, aircraft & associated transport equipment	5,079,911	2,382,190	-53.1
Miscellaneous manufactured articles	1,504,768	1,579,340	5.0
Other Imports	5,168,042	7,063,633	36.7
<b>Total</b>	<b>40,583,281</b>	<b>38,359,938</b>	<b>-5.5</b>

Source: Bureau of Customs & Border Protection, MOF and Bureau of Budget & Planning, MOF

**Ocean Cargo Carriers' Inbound Containers**

Type	Total Containers 4 <sup>th</sup> Qtr 2015	Total Containers 4 <sup>th</sup> Qtr 2016	% Change
20'D	502	427	-14.9
40'D	342	241	-29.5
20'R	26	38	46.2
40'R	47	41	-12.8
<b>Total</b>	<b>917</b>	<b>747</b>	<b>-18.5</b>

Source: Division of Marine Transportation, MPIIC

**DECEMBER 2016 QTR KEY POINTS**

- Overall, total imports declined by about 6% over the same period last year.
- Other imports group, which includes plastic, rubber & articles thereof saw a significant increase of about 37% largely due to imports of construction materials used for the ongoing water & sewer improvement project.
- Vehicles, aircraft & associated transport equipment group saw a significant decline of 53%. The increase of imports of boats contributed to last year's high number.
- Articles of stone, plaster, cement, glass & ceramic products group saw a decline of about 39%. Imports of ceramic products contributed to last year's high number.
- Other imports include Animal or vegetable oils & fats, Arms and ammunition, parts & accessories thereof, Footwear, headgear, umbrellas & parts thereof, Pearls, precious & semi-precious stones & metals, Photographic & optical, medical & surgical goods & clocks/watches & musical instruments, Plastic, rubber & articles thereof, Raw hides, skins, leather articles & travel goods, Textiles & textile articles, Wood pulp, paper & paperboard & articles thereof, Wood, cork & articles thereof & plaiting material, and Works of art, collectors pieces & antiques.
- The table on the top right corner shows the number of inbound containers by size and type. The overall number declined by about 19% over the same quarter last year.





**Ministry of Finance  
Bureau of Budget & Planning  
Office of Planning & Statistics**

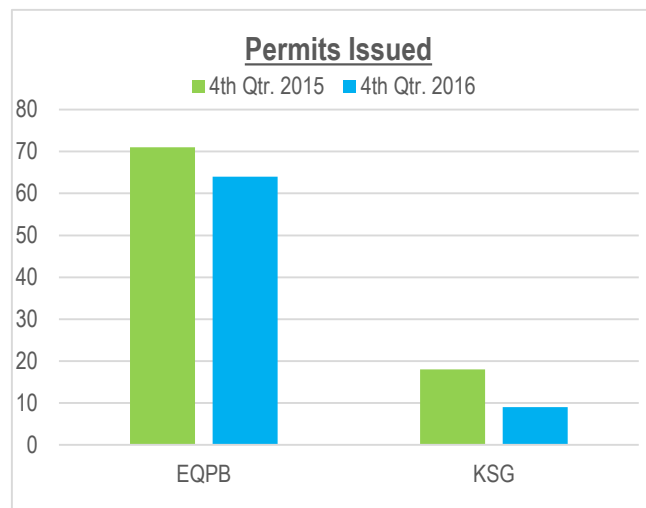
P. O. Box 6011, Melekeok, Republic of Palau 96939  
Tel. (680) 767-1269/1270 Fax. (680) 767-5642

Email: [ops@palaugov.org](mailto:ops@palaugov.org) ; Web address: <http://www.palaugov.org/budgetandplanning/>

**DECEMBER 2016 QTR KEY FIGURES-KSG**

Type	Building Permits 4 <sup>th</sup> Qtr 2015	Building Permits 4 <sup>th</sup> Qtr 2016
Commercial	4	1
Government	5	1
Residential	9	7
<b>Total</b>	<b>18</b>	<b>9</b>

Source: Building & Zoning, Koror State Government



**DECEMBER 2016 QTR KEY FIGURES-EQPB**

Type	Earthmoving Permits Issued 4 <sup>th</sup> Qtr 2015	Earthmoving Permits Issued 4 <sup>th</sup> Qtr 2016
Commercial	21	17
Government	20	21
Residential	30	26
<b>Total</b>	<b>71</b>	<b>64</b>

Source: Environmental Quality Protection Board, ROP

**DECEMBER 2016 QTR KEY POINTS**

- Building Permits issued this quarter by KSG-Building & Zoning dropped by 9 over the same period last year. A total of 9 building permits were issued with residential contributing the highest.
- Earthmoving permits issued for this quarter declined by 7 over the same period last year. A total of 64 permits were issued with residential contributing the highest. All of the earthmoving activities in the Republic of Palau with the exception of agricultural/funeral practices require an earthmoving permit from EQPB, whereas, building permits issued by KSG-Building & Zoning are only applicable to projects in Koror State.