



**Ministry of Finance
Bureau of Budget & Planning
Office of Planning & Statistics**

P. O. Box 6011, Melekeok, Republic of Palau 96939
Tel. (680) 767-1269/1270 Fax. (680) 767-5642

Email: ops@palaugov.org ; Web address: <http://www.palaugov.org/budgetandplanning/>

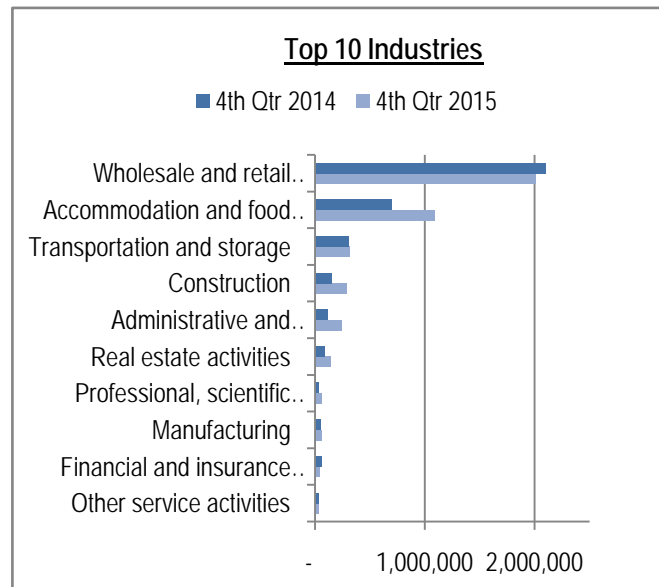
DECEMBER 2015 QTR KEY FIGURES

INDUSTRY	Total BGRT 4 th Qtr 2014 (\$)	Total BGRT 4 th Qtr 2015 (\$)	%Change	Total Number of BGRT Non-filers 4 th Qtr 2014	Total Number of BGRT Non-filers 4 th Qtr 2015
Agriculture and forestry	5,956	6,666	11.9	11	15
Fisheries	13,984	14,547	4.0	16	7
Mining and quarrying	17,217	26,171	52.0	3	1
Manufacturing	47,568	55,376	16.4	7	11
Construction	151,571	291,967	92.6	34	26
Wholesale & retail trade; repair of motor vehicles and motorcycles	2,101,637	2,007,251	-4.5	102	128
Transportation and storage	308,943	318,510	3.1	28	48
Accommodation and food service activities	693,350	1,088,945	57.1	45	87
Financial and insurance activities	60,609	39,735	-34.4	5	11
Real estate activities	88,522	145,650	64.5	59	74
Professional, scientific and technical activities	34,434	61,441	78.4	25	29
Administrative and support service activities	111,496	237,327	112.9	33	50
Other service activities	32,598	35,063	7.6	38	46
Other industries	51,659	56,007	8.4	7	17
TOTAL	3,719,663	4,384,654	17.9	413	550

Source: Division of Rev. & Tax, MOF and Bureau of Budget & Planning, MOF

DECEMBER 2015 QTR KEY POINTS

- Total BGRT collected this quarter increased by approximately 18% compared to the same quarter last year.
- Administrative & support service activities and Accommodation & food service activities saw increases of 113% and 57% respectively; largely connected to the increase of tourist arrivals.
- Mining & quarrying, and Construction industry increased by 52% and 93% respectively; mainly due to the renovation of secondary roads and dock improvements.
- Professional, scientific and technical activities and Real estate activities industry increased by about 78% and 65% respectively. This is due to several businesses filing more earnings this period compared to the same period last year.
- Other industries, which increased by about 8%, include Water Supply, Sewerage, Waste Management; Information and Communication; Education; Human Health and Social Work; and Arts, Entertainment and Recreation.
- Total BGRT Non-filers include all registered businesses with active business status that failed to file quarterly GRT.
- The total number of Non-Filers this quarter has increased by 137 compared to the same quarter last year.





**Ministry of Finance
Bureau of Budget & Planning
Office of Planning & Statistics**

P. O. Box 6011, Melekeok, Republic of Palau 96939
Tel. (680) 767-1269/1270 Fax. (680) 767-5642

Email: ops@palaugov.org Web address: <http://www.palaugov.org/budgetandplanning/>

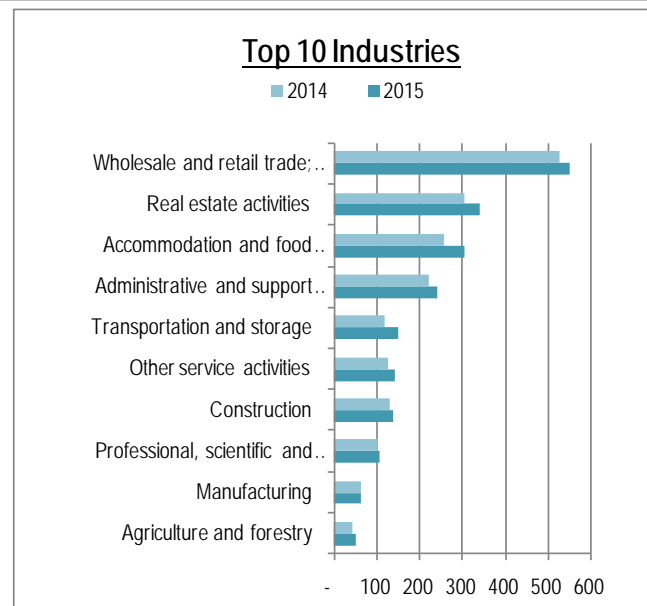
DECEMBER 2015 QTR KEY FIGURES

INDUSTRY	Total Registered Business License 2014	Total Registered Business License 2015	% Change
Agriculture and forestry	42	51	21.4
Fisheries	41	35	-14.6
Mining and quarrying	10	10	0.0
Manufacturing	64	64	0.0
Construction	130	140	7.7
Wholesale and retail trade	525	550	4.8
Transportation and storage	119	151	26.9
Accommodation and food service activities	256	305	19.1
Real estate activities	304	340	11.8
Professional, scientific & technical activities	101	108	6.9
Administrative and support service activities	223	241	8.1
Other service activities	128	144	12.5
Other Industries	98	106	8.2
Total	2,041	2,245	10.0

Source: Division of Rev. & Tax, MOF and Bureau of Budget & Planning, MOF

DECEMBER 2015 QTR KEY POINTS

- Business Licenses must be renewed by December 31st of each year to avoid penalty and interest fees. The table above shows the cumulative number of business licenses issued for year 2014 and 2015.
- To date, there have been a total of 2,245 licenses issued for business year 2015.
- Agriculture and forestry industry saw an increase of approximately 21%, whereas 18 are new business establishments while 33 are renewed licenses.
- The Fishing industry experienced a drop of approximately 15% with 35 business licenses issued to date, whereas 6 of them are new establishments while 29 are renewed licenses.
- The 27% increase in Transportation and storage industry is a combination of 34 new business establishments along with 117 renewed licenses.
- Accommodation and food service activities industry also saw an increase of approximately 19%. This increase includes 75 new establishments along with 230 renewed licenses.
- Other industries include Water Supply, Sewerage, Waste Management, Information and Communication, Financial and insurance activities, Education, Human Health and Social Work, and Arts, Entertainment and Recreation.





Ministry of Finance
Bureau of Budget & Planning
Office of Planning & Statistics

P. O. Box 6011, Melekeok, Republic of Palau 96939
 Tel. (680) 767-1269/1270 Fax. (680) 767-5642

Email: ops@palaugov.org ; Web address: <http://www.palaugov.org/budgetandplanning/>

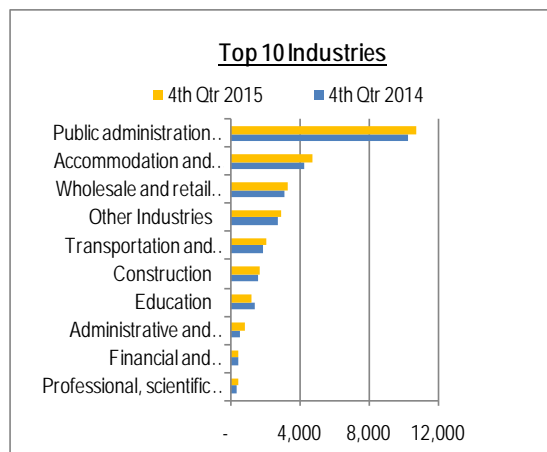
DECEMBER 2015 FIGURES

INDUSTRY	Total Wages 4 th Qtr 2014 (in USD'000)	Total Wages 4 th Qtr 2015 (in USD'000)	% Change
Agriculture	110	141	28.0
Fisheries	130	136	4.5
Mining and quarrying	167	196	17.6
Manufacturing	316	329	4.2
Construction	1,606	1,673	4.2
Wholesale and retail trade	3,110	3,326	7.0
Transportation and storage	1,903	2,084	9.5
Accommodation and food service activities	4,262	4,686	10.0
Financial and insurance activities	500	484	-3.2
Real estate activities	240	279	16.1
Professional, scientific and technical activities	360	451	25.2
Administrative and support service activities	564	825	46.2
Public administration and defence	10,217	10,709	4.8
Education	1,449	1,237	-14.6
Other Industries	2,703	2,882	6.6
TOTAL	27,637	29,438	6.5

Source: Social Security Administration; Bureau of Budget & Planning, MOF

DECEMBER 2015 KEY POINTS

- Overall wages collected this quarter increased by approximately 7% compared to the same period last year.
- Agriculture industry saw an increase of 28%, consistent with the employment numbers seeing that this industry seems to have recovered from the devastating typhoon Haiyan in 2013.
- Mining & quarrying and Construction industries saw increases of 18% and 4% respectively, likely connected with the park and road infrastructure projects.
- Tourism related industry such as Administrative & support service activities experienced 46% increase in line with the increase in visitor arrivals. Rock island tours, Babeldaob tours and Diving/Snorkeling tours are included in this industry.
- Other Industries include Water supply; sewerage, waste management and remediation activities, Information and communication, Activities of extraterritorial organizations and bodies, Arts, entertainment and recreation, Human health and social work activities, Electricity, gas, steam and air conditioning supply, Activities of household as employers, undifferentiated goods- and services-producing activities of households for own use, and Other service activities.





**Ministry of Finance
Bureau of Budget & Planning
Office of Planning & Statistics**

P. O. Box 6011, Melekeok, Republic of Palau 96939

Tel. (680) 767-1269/1270 Fax. (680) 767-5642

Email: ops@palaugov.org ; Web address: <http://www.palaugov.org/budgetandplanning/>

DECEMBER 2015 QTR KEY FIGURES

INDUSTRY	Average Employed 4 th Qtr 2014	Average Employed 4 th Qtr 2015	% Change
Agriculture and forestry	101	125	23.8
Fisheries	83	79	-4.8
Mining and quarrying	60	69	15.0
Manufacturing	163	174	6.7
Construction	800	836	4.6
Wholesale and retail trade	1,499	1,560	4.1
Transportation and storage	797	816	2.4
Accommodation and food service activities	1,706	1,773	3.9
Financial and Insurance activities	100	103	3.0
Real estate activities	156	154	-1.3
Administrative & support service activities	245	420	71.4
Public administration and defence	3,021	3,085	2.1
Education	422	403	-4.5
Other service activities	270	281	4.1
Other Industries	1,470	1,398	-4.3
TOTAL	10,891	11,276	3.5

Source: Social Security Administration and Bureau of Budget & Planning, MOF

DECEMBER 2015 QTR KEY POINTS

- Quarterly employment numbers are derived by averaging total number of people filing returns at the end of the quarter. Industry employment counts are classified based on the business activity as disclosed on their Social Security activity description.
- Overall, the total average employment increased by approximately 4% compared to the same period last year.
- Agriculture and forestry industry saw an increase of about 24%, likely connected to the improved farming activities following the devastating typhoon Haiyan in 2013.
- Mining and quarrying and Construction industries showed increases, likely associated with the park and road infrastructure projects.
- The 71% increase in Administrative & support service activities industry is mainly due to the increase of tourism related support service activities such as tours to the Rock islands, Babeldaob and Diving/Snorkeling tours.
- Other industries include Water Supply; sewerage, waste management and remediation activities, Activities of Extraterritorial organizations and bodies, Activities of household as employers; undifferentiated goods, Information and communication, Arts, entertainment and recreation, Human Health and social work activities, Electricity, gas, steam and air conditioning supply, and Professional, scientific and technical activities.

